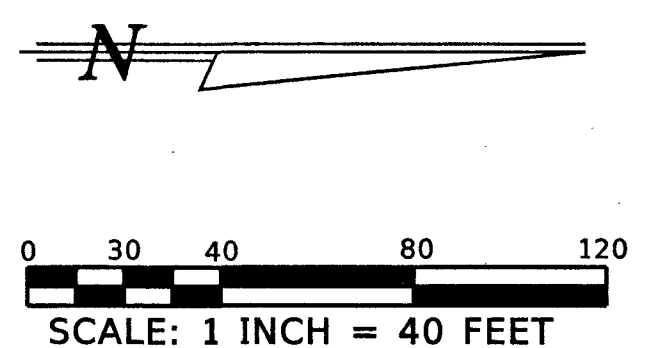


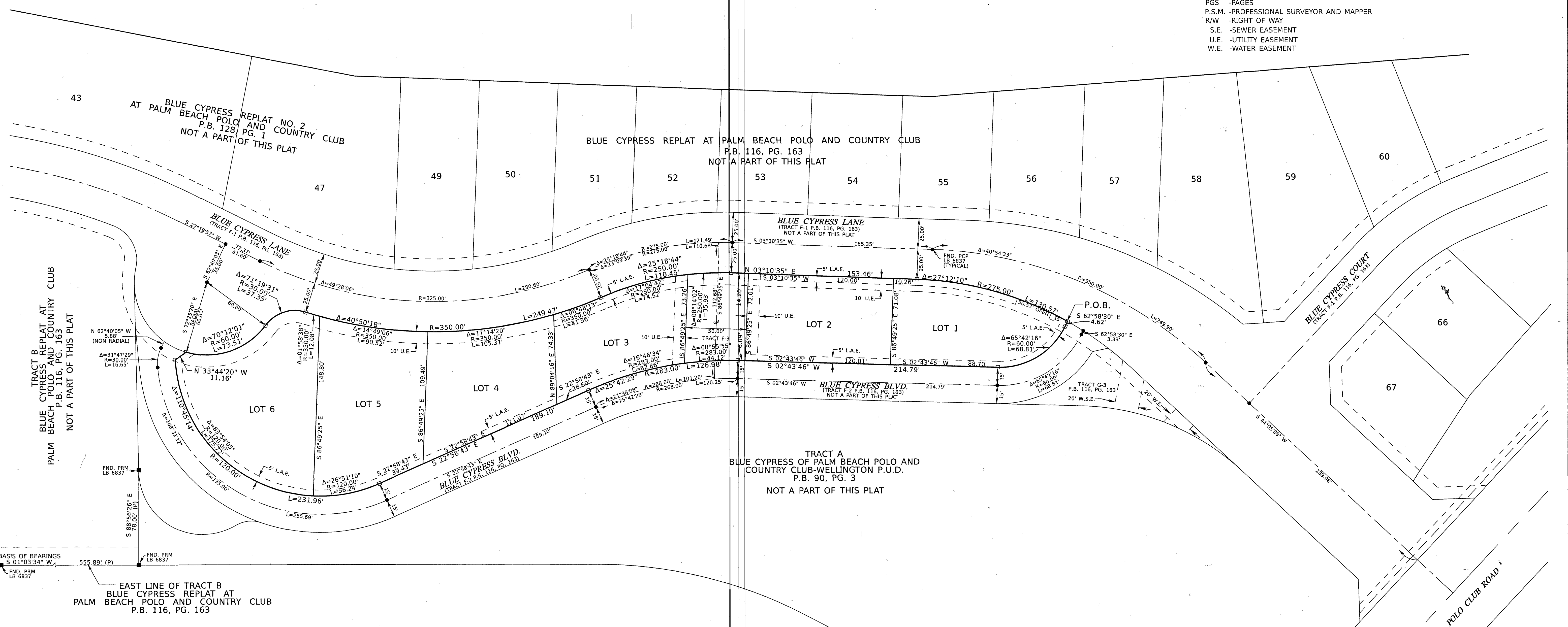
BLUE CYPRESS ESTATES

BEING A REPLAT OF TRACT G-1, BLUE CYPRESS REPLAT AT PALM BEACH POLO AND COUNTRY CLUB AS RECORDED IN PLAT BOOK 116 PAGES 163 THROUGH 165, OF THE PUBLIC RECORDS OF PALM BEACH COUNTY, FLORIDA, LYING IN SECTION 15, TOWNSHIP 44 SOUTH, RANGE 41 EAST, VILLAGE OF WELLINGTON, PALM BEACH COUNTY, FLORIDA.

SHEET NO. 2 OF 2
OCTOBER, 2024



- LEGEND:**
- -SET PERMANENT REFERENCE MONUMENT, LB-6837
 - -PERMANENT CONTROL POINT (PCP)
 - Δ -DELTA ANGLE
 - B.E. -BRIDLE EASEMENT
 - CL -CENTERLINE
 - D.B. -DEED BOOK
 - D.E. -DRAINAGE EASEMENT
 - ESMT. -EASEMENT
 - L -ARC LENGTH
 - L.A.E. -LIMITED ACCESS EASEMENT
 - MAINT. -MAINTENANCE
 - M.E. -MAINTENANCE EASEMENT
 - N/D -NAIL & DISK
 - N/W -NAIL & WASHER
 - N.R. -NOT RADIAL
 - R -RADIUS
 - N.T.S. -NOT TO SCALE
 - O.R.B. -OFFICIAL RECORD BOOK
 - P.O.B. -POINT OF BEGINNING
 - P.O.C. -POINT OF COMMENCEMENT
 - P -PLAT
 - P.B. -PLAT BOOK
 - PGS -PAGES
 - P.S.M. -PROFESSIONAL SURVEYOR AND MAPPER
 - R/W -RIGHT OF WAY
 - S.E. -SEWER EASEMENT
 - U.E. -UTILITY EASEMENT
 - W.E. -WATER EASEMENT



BASIS OF BEARINGS
S 01°03'34" W

EAST LINE OF TRACT B
BLUE CYPRESS REPLAT AT
PALM BEACH POLO AND COUNTRY CLUB
P.B. 116, PG. 163